



Company Overview - Rail Bridge Focus





COMPANY PROFILE, GROUP COMPANIES, PRODUCTS, SERVICES & EXPERIENCE

COMPANY PROFILE

We are a world class, multi-disciplined engineering solution provider with core competencies in structural protection and movement control.

- We offer an unrivalled range of specialist services including spray applied waterproofing membranes, expansion joints, structural bearings, deck drainage as well as bespoke structural fabrications.
- Through early project engagement with stakeholders, we are able to provide high quality engineering solutions by way of consultancy support or the delivery of a complete project management service.
- From design, manufacture and installation, to inspection and replacement work - our single point responsibility offering, leaves USL Ekspan uniquely placed to solve complex challenges.
- Part of the USL Group, a multi-national specialist construction and civil engineering organisation.





Innovate, Collaborate & Respond with Global Reach



KEY CLIENTS, PRODUCTS & CASE STUDIES

HS2

NetworkRail



SKANSKA



Balfour Beatty



AMCO GIFFEN

**WHO WE WORK
WITH...**

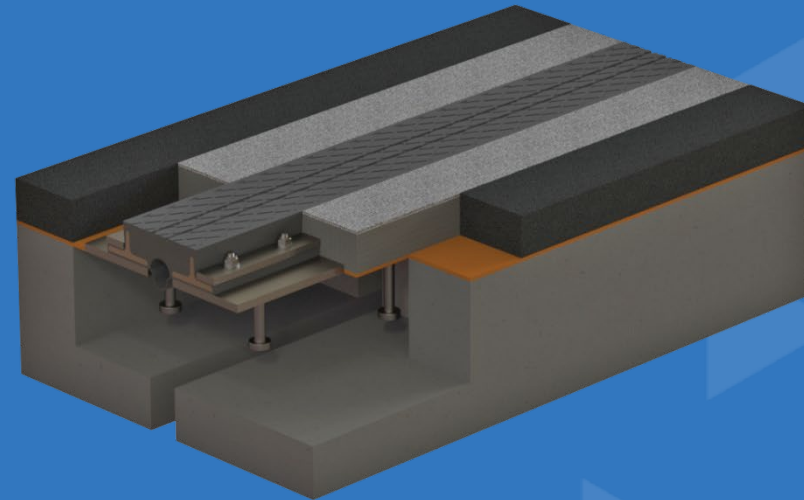
** Key Clients & Contractors*



MECHANICAL EXPANSION JOINTS

We are market leaders in the manufacture, supply and installation of expansion joints which have been carefully developed to provide safe, efficient and economical methods of sealing construction gaps.

- Fully compliant with CD357 standards
- Movement range up to 2000mm
- Rapid on-site assembly resulting in minimal disruption to traffic
- Minimised future maintenance costs
- Excellent track and performance record



CRUM CREEK VIADUCT, USA

- Supply and installation of 2no. USL Ekspan T-Mat 260 expansion joints



DOMOKOS BRIDGE, GREECE

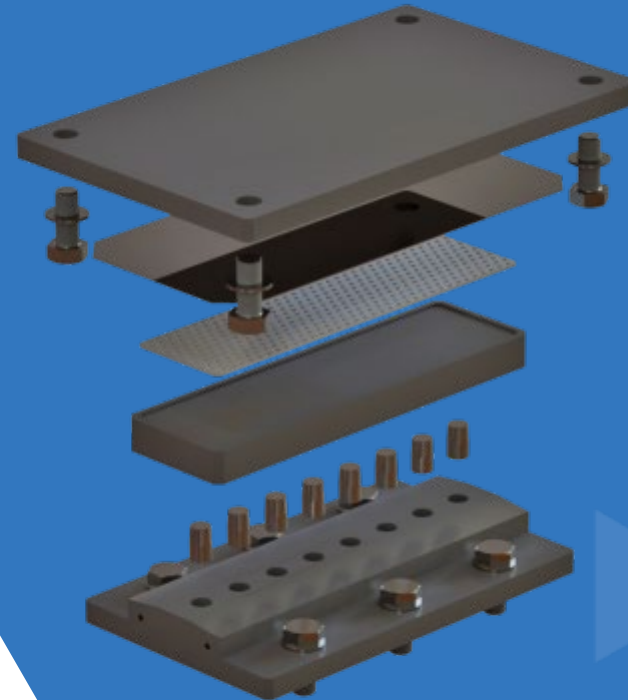
- Design and manufacture of 2no.
Open Type Rail Joints



BEARINGS

We are the UK's largest bearing manufacturer and installer.

- A full range of mechanical and elastomeric bearings for many different articulation requirements
- A comprehensive range of mechanical and laminated elastomeric bearings in sizes from 50 to 3000 tonne capacities
- Custom designed bearings for challenging applications
- Structural bearings manufactured and marked in accordance with either EN1337





NORTHERN HUB PROJECT, UK

- Design, manufacture, supply and installation of 152no.mechanical and elastomeric bearings on 7 structures
- Supply and installation of 13no. T-Mat expansion joints on 9 structures

NORTHERN HUB PROJECT - STRUCTURE DSE146 SPAN19, UK

- Temporary works
- Bridge jacking
- Installation of 2no. T-Mat 80 expansion joints
- Installation of 3no. mechanical and 23no. elastomeric bearings



STRUCTURAL WATERPROOFING

- Methyl Methacrylate (MMA) and Polyurethane (PU) structural waterproofing grades available
- Fully compliant with CD 358 Standards
- In-house manufactured systems
- Installed on over 15,000 structures globally
- Spray applied and rapid curing
- Extremely hard wearing and durable



BOROUGH VIADUCT, UK

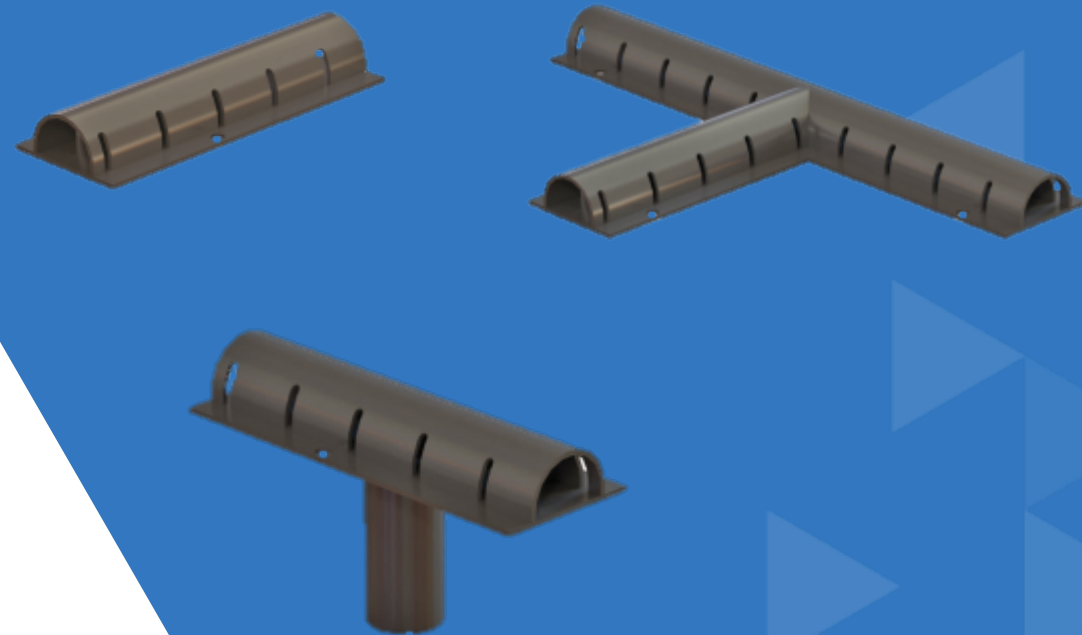
- Installation of Pitchmastic PmB structural waterproofing to rail bridge viaduct



DRAINAGE PRODUCTS

Our through deck drain units are designed to provide 'Spot Drainage' points wherever needed or to be used in conjunction with the channel system to provide a wider area of water collection.

USL Ekspan's durable galvanised mild steel section designed to efficiently remove water away from the bridge deck. The channel is supplied in two-metre lengths for ease of installation and is compliant with the Highways England BA26/94.





CAPABILITIES & SERVICES

- ◆ Almost 40 years contracting experience on rail bridges:
 - ◆ Specialist bridge jacking and bearing installation & replacement teams
 - ◆ Waterproofing teams
 - ◆ Expansion joint installation and replacement teams
- ◆ Fully owned fleet of specialist installation wagons and equipment
- ◆ PTS trained operatives and MEWP's inspectors
- ◆ Full UK & Ireland coverage
- ◆ Fully qualified and experienced project engineers, site managers and quantity surveyors
- ◆ CHAS and CCS approved company



MACHINE CAPABILITIES

CNC Machining Centres

- Largest bed 2m x 3.1m
- CNC turning vertical and horizontal lathe with bar feed
 - Turning with bar feed up to 100mm dia.
- Vertical lathe up to 860mm diameter approx.
- Fabrication facility and carnage
- Welding and turntable facilities

SUMMARY

Why USL Ekspan?

- 'Single point responsibility' – products are designed, manufactured, supplied and installed in-house
- All products are manufactured in the UK
- One interface to manage the project
- Backed by a \$5 billion turnover multinational specialist coatings conglomerate
- Almost 40 years experience installing and maintaining critical infrastructure assets globally



CONTACT US

www.uslekspan.com



Head Office

Kingston House, 3 Walton Road, Pattinson North,
Washington, Tyne & Wear, NE38 8QA, UK

t: +44 (0)191 416 1530

e: info@uslekspan.com



Sales & Manufacturing

Compass Works, 410 Brightside Lane,
Sheffield, South Yorkshire, S9 2SP, UK

t: +44 (0)114 261 1126

e: info@uslekspan.com

