



Company Overview - Highway Bridge Focus





COMPANY PROFILE, GROUP COMPANIES, PRODUCTS, SERVICES & EXPERIENCE

COMPANY PROFILE

We are a world class, multi-disciplined engineering solution provider with core competencies in structural protection and movement control.

- We offer an unrivalled range of specialist services including spray applied bridge deck membranes, bridge deck expansion joints, structural bearings, bridge deck drainage as well as bespoke structural fabrications.
- Through early project engagement with stakeholders, we are able to provide high quality engineering solutions by way of consultancy support or the delivery of a complete project management service.
- From design, manufacture and installation, to inspection and replacement work, our single point responsibility offering, leaves USL Ekspan uniquely placed to solve complex challenges.
- Part of the USL Group, a multi-national specialist construction and civil engineering organisation.





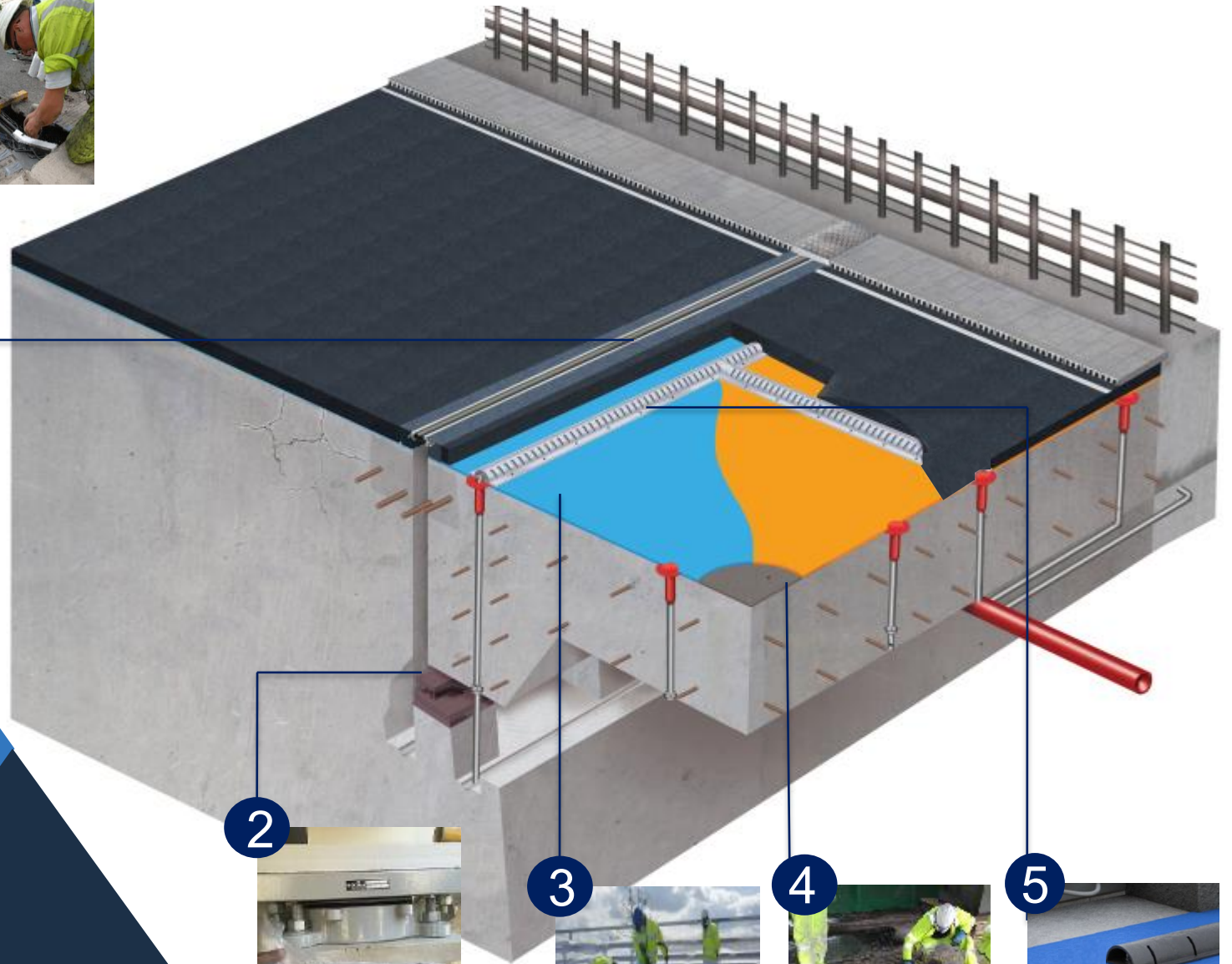
Innovate, Collaborate & Respond with Global Reach

HIGHWAY BRIDGE SOLUTIONS

1. Mechanical Expansion Joints
2. Structural Bearings
3. Waterproofing Systems
4. Concrete Repairs
5. Bridge & Sub-surface Drainage



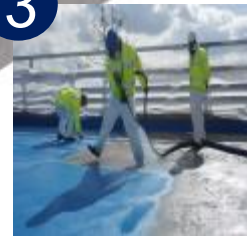
1



2



3



4



5





KEY CLIENTS, PRODUCTS & CASE STUDIES



Bainneagar Iompair Éireann
Transport Infrastructure Ireland



SKANSKA

Balfour Beatty

**Sir Robert
McALPINE**

**WHO WE WORK
WITH...**

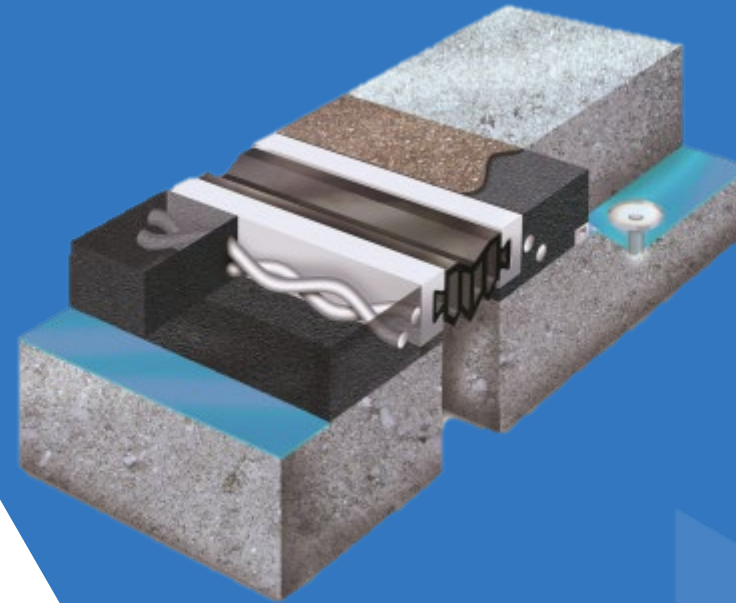
** Key Clients*



MECHANICAL EXPANSION JOINTS

We are market leaders in the manufacture, supply and installation of expansion joints which have been carefully developed to provide safe, efficient and economical methods of sealing construction gaps.

- Fully compliant with CD357 standards
- Movement range up to 2000mm
- Rapid on site assembly resulting in minimal disruption to traffic
- Minimised future maintenance costs
- Excellent track and performance record



A19 TEES FLYOVER

- Full weekend closure programme
- Replacement of 6no Britflex BEJ expansion joints
- Replacement of 4no Britflex MEJS expansion Joints





A19 TEES FLYOVER

PROJECT INSTALLATION VIDEO

* Click screen to watch video



TOWER BRIDGE

- T-Mat expansion joint replacement on the North & South approach spans



WESTMINSTER BRIDGE

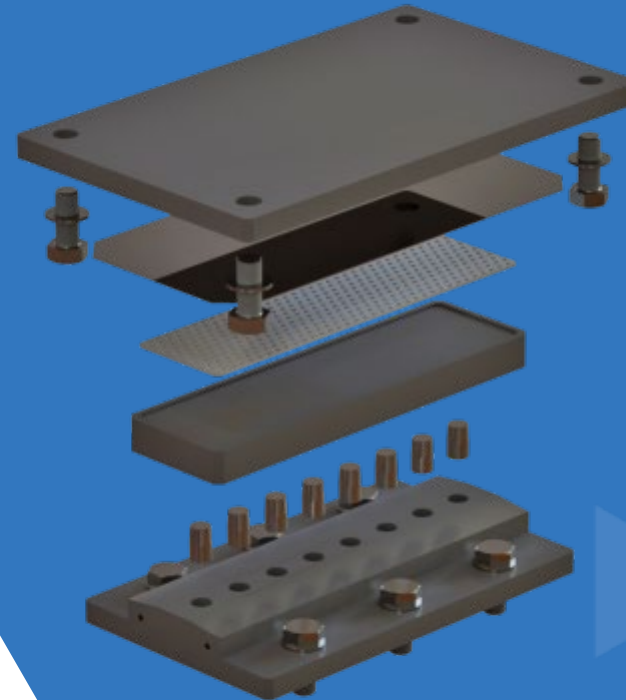
- Installation of Britflex BEJ expansion joints and cover plates in the footpath



BEARINGS

We are the UK's largest bearing manufacturer and installer.

- A full range of mechanical and elastomeric bearings for many different articulation requirements
- A comprehensive range of mechanical and laminated elastomeric bearings in sizes from 50 to 3000 tonne capacities
- Custom designed bearings for challenging applications
- Structural bearings manufactured and marked in accordance with either EN1337 or BS5400





NEWHAVEN PORT ACCESS ROAD

- Manufacture, supply and installation of 24no USL Ekspan spherical bearings
- Manufacture, supply and installation of temporary works including temporary bridge restraints
- Manufacture, supply and installation of Britfex BEJ and PmB waterproofing

TICKTON FLYOVER

- Manufacture, supply and installation of 200+ USL Ekspan Elastomeric, Pot, Free and Guide Restraint Bearings
- Installation of temporary works, including temporary bridge restraints
- Supply and installation of Transflex and PmB



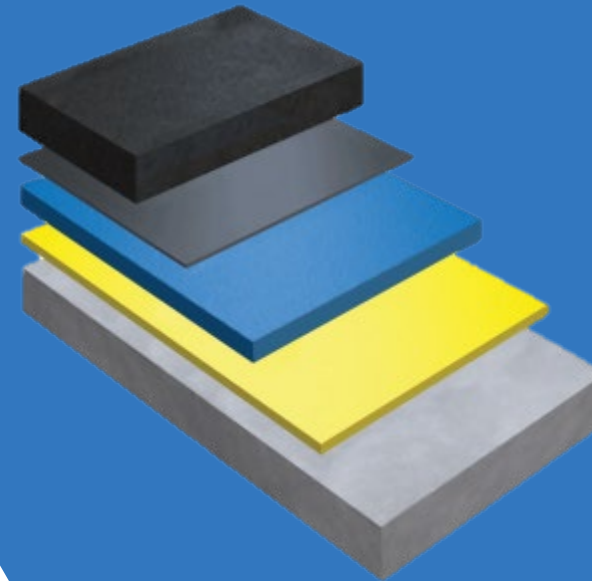
BROMLEY HEATH BRIDGE BEARING REPLACEMENT

- Manufacture, supply and replacement of existing bridge bearings with 20no new USL Ekspan EN1337 compliant spherical and rocker bearings
- Installation of temporary works propping system, lateral restraint and monitoring system



STRUCTURAL WATERPROOFING

- Methyl Methacrylate (MMA) and Polyurethane (PU) structural waterproofing grades available
- Fully compliant with CD 358 Standards
- In-house manufactured systems
- +20,000m² installed on over 15,000 structures globally
- Spray applied and rapid curing
- Extremely hard wearing and durable



H A P A S
Roads and Bridges





**MULTI-
AWARD
WINNING
PROJECT**

NEW SPIRE BRIDGE

- PmB structural waterproofing applied to bridge deck
- Installation of USL Ekspan mechanical expansion joints and bearings
- Kerb drainage systems



FORTH ROAD BRIDGE

- Installation of PmB waterproofing to bridge approach roads





M74 COMPLETION

- Our works included the application of Britdex MDP waterproofing to 14 bridges



DRAINAGE PRODUCTS

Our through deck drain units are designed to provide 'Spot Drainage' points wherever needed or to be used in conjunction with the channel system to provide a wider area of water collection.

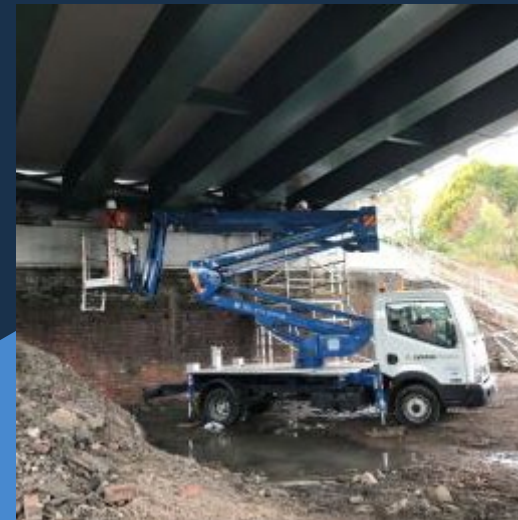
USL Ekspan's durable galvanised mild steel section designed to efficiently remove water away from the bridge deck. The channel is supplied in two-metre lengths for ease of installation and is compliant with the Highways England BA26/94.





CAPABILITIES & SERVICES

- ◆ Almost 40 years contracting experience on highway and rail bridges:
 - ◆ Specialist bridge jacking and bearing installation & replacement teams
 - ◆ Waterproofing teams
 - ◆ Expansion joint installation and replacement teams
- ◆ Fully owned fleet of specialist installation wagons and equipment
- ◆ PTS trained operatives and MEWP's inspectors
- ◆ Full UK & Ireland coverage
- ◆ Fully qualified and experienced project engineers, site managers and quantity surveyors
- ◆ CHAS and CCS approved company



MACHINE CAPABILITIES

CNC Machining Centres

- Largest Bed 2m x 3.1m
- CNC Turning vertical and horizontal lathe with Bar feed
 - Turning with bar feed up to 100mm dia
- Vertical Lathe up to 860mm diameter approx.
 - Fabrication facility and carnage
 - Welding and turntable facilities

SUMMARY

Why USL Ekspan?

- 'Single point responsibility' – products are designed, manufactured, supplied and installed in-house
- All products are manufactured in the UK
- One interface to manage the project
- Backed by a \$5 billion turnover multinational specialist coatings conglomerate
- Almost 40 years experience installing and maintaining critical infrastructure assets globally



CONTACT US

WWW.USLEKSPAN.COM



Head Office

Kingston House, 3 Walton Road, Pattinson North,
Washington, Tyne & Wear, NE38 8QA, UK

t: +44(0)191 416 1530

e: info@uslekspan.com



Sales & Manufacturing

Compass Works, 410 Brightside Lane,
Sheffield, South Yorkshire, S9 2SP, UK

t: +44(0)114 261 1126

e: info@uslekspan.com

