



| We are Offshore  
Oil and Gas





We are  
Offshore - Oil & Gas



# Company Profile

We are a world class, multi-disciplined engineering solution provider.

We offer an unrivalled range of specialist services structural bearings.

Through early project engagement with stakeholders, we are able to provide high quality engineering solutions by way of consultancy support or the delivery of a complete project management service.

From design, manufacture and installation, to inspection and replacement work, our single point responsibility offering, leaves USL Ekspan uniquely placed to solve complex challenges.

## We Are



Offshore



Bridges



Rail



Airports



Renewable  
Energy





# Why USL Ekspan



## SERVICES

We offer an unrivaled range of specialist engineering products and services.



## DESIGN & MANUFACTURE

From design, manufacture and installation, to inspection and replacement work, our single point responsibility offering, leaves USL Ekspan uniquely placed to solve complex challenges.



## PROJECTS

Through early project engagement with stakeholders, we are able to provide high quality engineering solutions by way of consultancy support or the delivery of a complete project management service.



## MULTI-NATIONAL

USL Ekspan are a part of the USL Group, a multi-national specialist construction and civil engineering organisation.

[www.uslgroup.com](http://www.uslgroup.com)

We are a world class, multi-disciplined engineering solution provider with core competencies in structural protection and movement control.

# Key Clients

## WHO WE WORK WITH

USL Ekspan have worked with a broad range of clients both in the UK and worldwide:





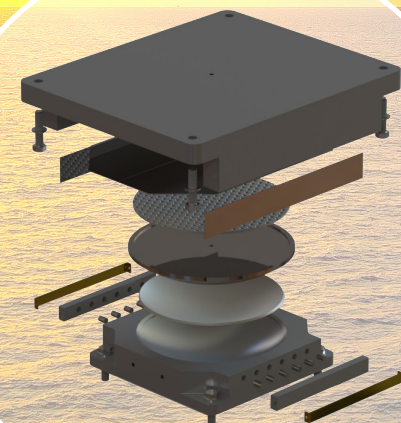
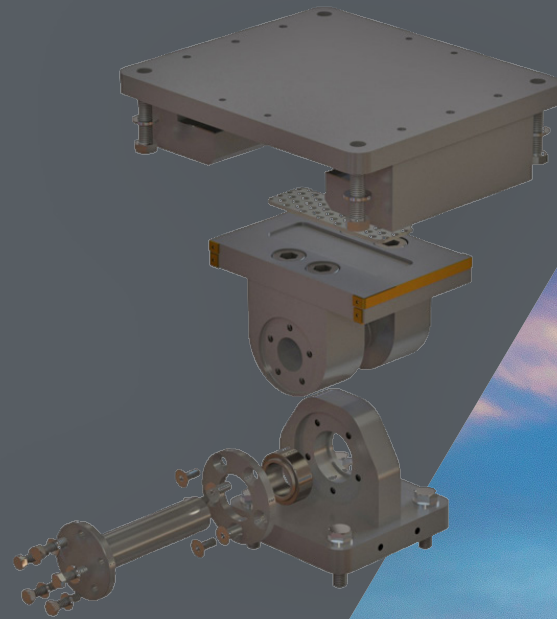
# Link Bridge Bearings

WE ARE THE UK'S LARGEST BEARING  
MANUFACTURER AND INSTALLER.

A full range of mechanical and elastomeric  
bearings for different articulation  
requirements and sizes from 50 to 3000  
tonne capabilities.

Custom designed bearings for challenging  
applications.

Structural bearings manufactured and  
marked in accordance with EN1337,  
BS5400 or AASHTO LRFD.



GE - SPHERICAL  
(EN1337-7)

## KEY PROJECTS

USL Ekspan provide full turnkey solutions – for supply, installation and maintenance of  
bearings on link bridges, which connect and carry services between platforms. USL Ekspan  
have highly skilled and fully trained offshore engineers who regularly visit installations to  
maintain sliding bearings.



BRIDGE JACKING &  
BEARING REPLACEMENT



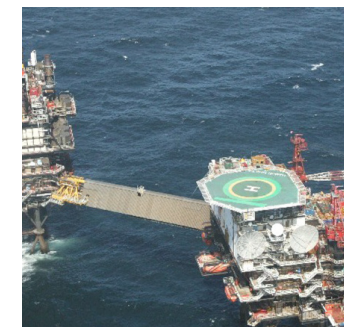
BRIDGE BEARING  
INSPECTION



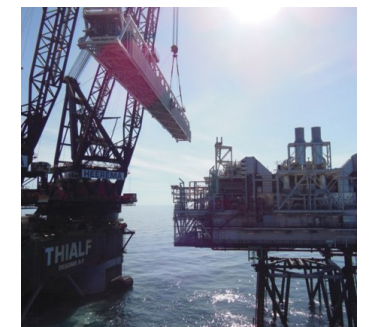
BEARING  
SUPPLY



SCOTT PLATFORM  
LINK BRIDGE



NORTH ALWYN PLATFORM  
LINK BRIDGE



OFFSHORE LINK BRIDGE  
BEARING INSPECTIONS



## CONTRACTING & SITE SERVICES

### 20 years offshore platforms

- Specialist bridge jacking and bearing installation & replacement teams
- Waterproofing teams
- Expansion joint installation and replacement teams

## IN HOUSE DESIGN AND MACHINING CAPABILITES

### In house design team:

- CNC Machining capabilities
- Fabrication
- Welding
- Temporary Works manufacture

### Service

In house Offshore qualified operatives and engineers  
Rope Access trained operatives

## INSPECTIONS

### Structural Bearings

- offshore structural bearings
- Collaborate maintenance solutions

## PRODUCT SALES

### Structural Bearings

- Mechanical
- Elastomeric
- Pipeline Bearings

## SERVICE

### Bearings

- New installations
- Refurbishment
- Monitoring
- On site refurbishment
- Structural jacking
- Temporary Works





# Phenolic Grating

DESIGN, FABRICATION & INSTALLATION  
OF SPECIALIST GRATING PRODUCTS



Single span means excellent load bearing characteristics

- High flame resistance/self extinguishing
- Low smoke and toxic fume emissions
- High temperature resistance
- UV protection
- US Coast Guard (Level 2) & DNV approved

**Note:** Other GRP types are also readily available.



16015 - PHENOLIC GRATING

## KEY PROJECTS

FibrePH grating is an alternative to maintenance-intensive metallic grating for applications where conventional pultruded grating cannot be used. FibrePH can withstand high temperatures and direct flame while maintaining its structural integrity. The feature makes the grating ideal for a wide range of offshore, marine, transportation and industrial applications.



WIRE LINE GANTRY

Phenolic Grating



SUBSEA MANIFOLDS

Moulded HLC Grating



IMPACT PROTECTION

Moulded HLC Grating



PETROBRAS BARACUDA  
& CARATINGA FPSO

Access Ladders & Handrails

## KEY CLIENTS







## CONTACT US

### Head Office

Kingston House, 3 Walton Road, Pattinson North,  
Washington, Tyne & Wear, NE38 8QA, UK

**t:** +44 (0) 191 416 1530   **e:** [info@uslekspan.com](mailto:info@uslekspan.com)

### Sales & Manufacturing

Compass Works, 410 Brightside Lane,  
Sheffield, South Yorkshire, S9 2SP, UK

**t:** +44 (0) 114 261 1126   **e:** [info@uslekspan.com](mailto:info@uslekspan.com)

[www.uslekspan.com](http://www.uslekspan.com)