



| We are
Rail

Company Profile

We are a world-class, multi-disciplined engineering solution provider with core structural protection and movement control competencies.

We offer an unrivalled range of specialist services, including spray-applied waterproofing membranes, expansion joints, structural bearings, deck drainage, and bespoke structural fabrications.

consultancy support or the delivery of a complete project management service.

Part of the USL Group, a multi-national specialist construction and civil engineering organisation.

Through early project engagement with stakeholders, we can provide high-quality engineering solutions through

We Are



Bridges



Rail



Underground
Construction



Oil & Gas



Renewable
Energy



Airports

Applications

- Rail Bridges
- Footbridges
- Viaducts
- Stations & Platforms
- Subways
- Tunnels

Services



Design



Manufacture



Installation



Inspection, Maintenance
& Repair

Why Choose USL Ekspan?



Services

We offer an unrivalled range of specialist engineering services.



Design & manufacture

Our single-point responsibility is to offer design, manufacture, installation, inspection and replacement work, allowing USL Ekspan to be uniquely placed to solve complex challenges.



Special projects

Through early project engagement with stakeholders, we can provide high-quality engineering solutions by way of consultancy support or the delivery of a complete project management service.



UK manufactured products

Our market-leading range of specialist engineering products are manufactured in the UK.

Experts in movement control

Key Partners

Who we work with

USL Ekspan works with a broad range of clients in the UK and overseas:

HS2



SKANSKA



Balfour Beatty



AMCO GIFFEN

Operational Excellence

- 40 years of contracting experience on rail structures
- Own a fleet of specialist installation machinery
- PTS trained operatives and MEWP'S inspectors
- Full UK & Ireland coverage
- Fully qualified and experienced project engineers, site managers and quantity surveyors
- CHAS and CCS approved company

RISQS Certified

RISQS is run by the industry, for the industry – so you can be sure that we have the best interests of rail buyers in mind.



Cavendish House:
Our state of the art Sales, Manufacturing
& Operations facility

Site Services

On-site Technical Support



Specialist Equipment



In-house Installation Teams



Expert Project Management





We are
Rail

USL EKSPAN

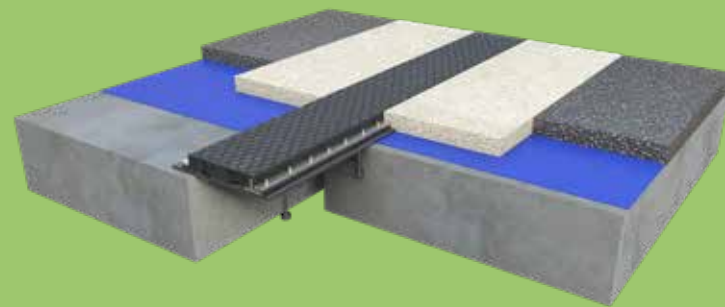
Crum Creek Viaduct, USA



Mechanical Expansion Joint

We pride ourselves on being a leading manufacturer, supplier and installer of globally recognised mechanical expansion joints, which have been carefully developed to provide safe, efficient and economical methods of sealing construction gaps.

- Fully compliant with CD357 standards
- Movement range up to 390mm
- Rapid on-site assembly resulting in minimal disruption to traffic
- Minimised future maintenance costs
- Excellent track and performance record
- Monolithic so suitable against stray currents



USL EKSPAN

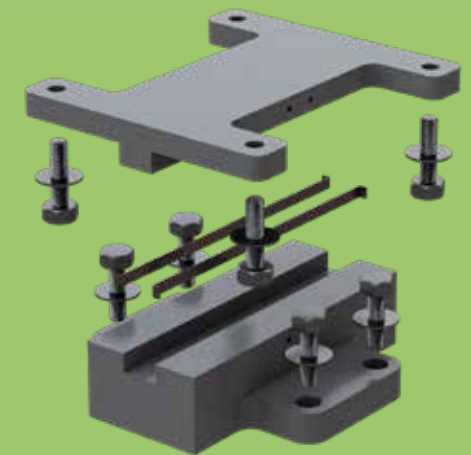
Northern Hub Project -
Structure DSE146 Span 12, UK



Structural Bearings

All USL Ekspan elastomeric & structural bearings are manufactured in-house using the latest cutting edge fabrication techniques and processes.

- A full range of mechanical and elastomeric bearings for many different articulation requirements
- A comprehensive range of mechanical and laminated elastomeric bearings in sizes from 50 to 3000-tonne capacities
- Custom designed bearings for challenging applications
- Structural bearings manufactured and marked following either EN1337





We are
Rail

USL **EKSPAN**

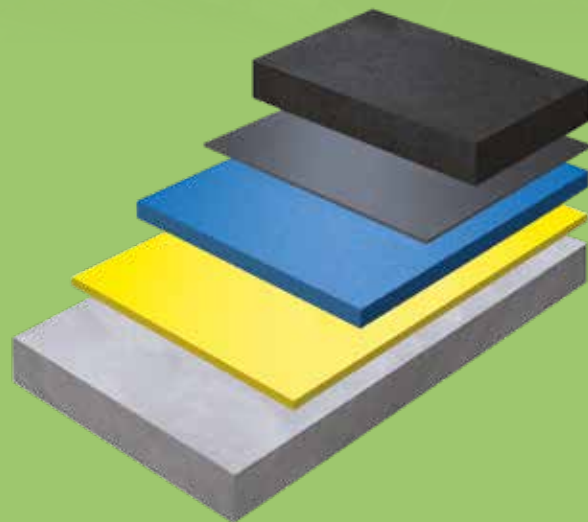
USL **EKSPAN**

Borough Viaduct, UK

Structural Waterproofing

PmB is a two-part, spray applied, durable corrosion protection and waterproofing material. The high-performance system is 100% polyurethane contains no fillers or additives, and is VOC free. Once applied, Pitchmastic PmB has exceptional bond strength to all commonly used substrates, has excellent crack-bridging capability, a life expectancy of over 30 years, and holds British Board of Agrément approval.

The system has gained BBA approval as a damp proof and waterproofing membrane for internal and external tanking. The system holds licenses in many continents, including Europe, North America, and the Middle and the Far East.



Rail Bridge, Footbridge & Viaduct Waterproofing Applications



PITCHMASTIC PmB



We are
Rail

USL **EKSPAN**

West Dulwich Station, UK



12

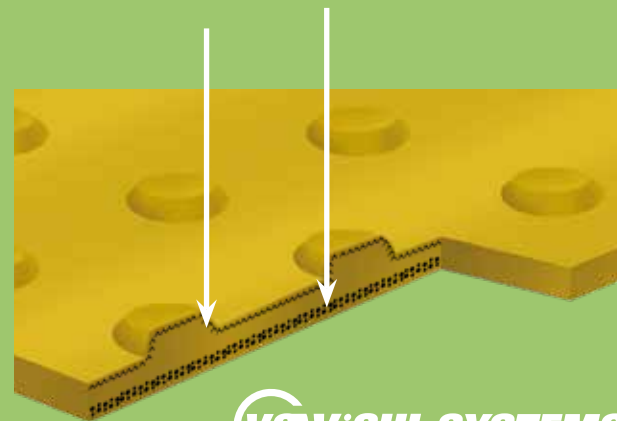
Surface Mounted Tactile Paving

The innovative surface-bonded tactile system has a tried and tested track record of over 20 years. The innovative technique ensures the perfect distribution of resin and special fillers within the tile construction.

Visul tiles are manufactured on our innovative assembly line, thus ensuring perfect fillers and resin distribution, ensuring excellent wearing qualities with built-in flexibility.

Heavyweight fillers increase wearing qualities 7 times more resilient than concrete.

Lightweight fillers increase flexibility, ensuring complete contact with substrate.



VS VISUL SYSTEMS

CE

USL **EKSPAN**



13



CONTACT US

Head Office

Kingston House, 3 Walton Road, Pattinson North,
Washington, Tyne & Wear, NE38 8QA, UK

t: +44 (0) 191 416 1530 e: info@uslekspan.com

Sales & Manufacturing

Compass Works, 410 Brightside Lane,
Sheffield, South Yorkshire, S9 2SP, UK

t: +44 (0) 113 841 8861 e: info@uslekspan.com

www.uslekspan.com